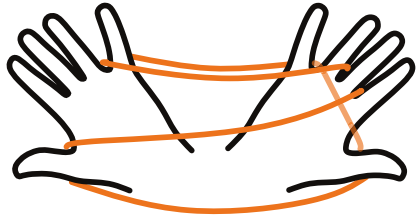


LA TOUR EIFFEL

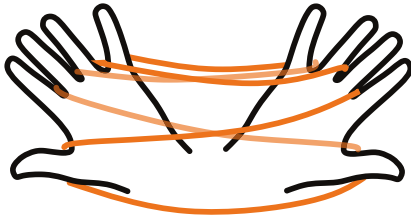
1



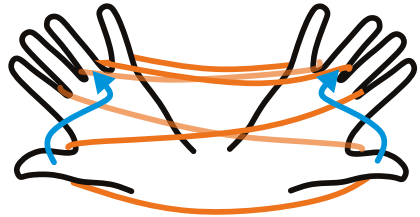
2



3

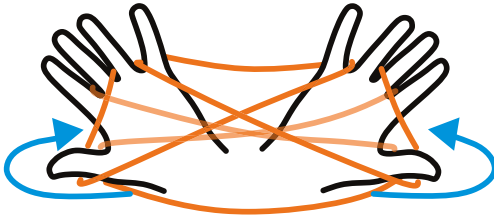


4

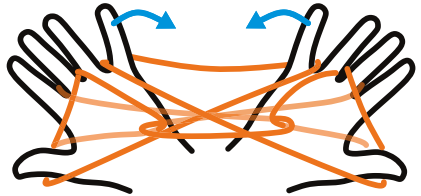


Avec chaque pouce venir chercher la ficelle entre le majeur et l'annulaire.

5



6

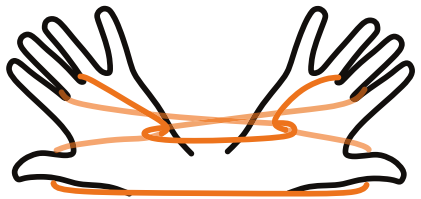


Faire passer la ficelle du bas par dessus les pouces.

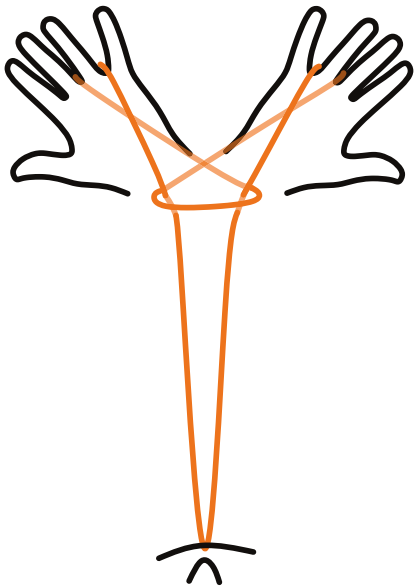
Lâcher la ficelle des petits doigts.

MANUFACTURE
en Famille

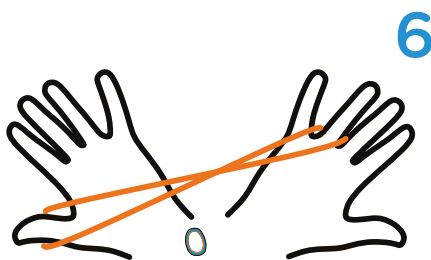
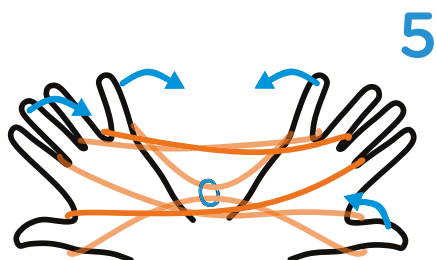
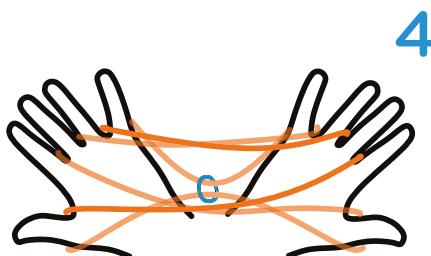
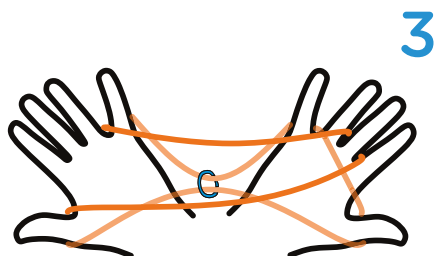
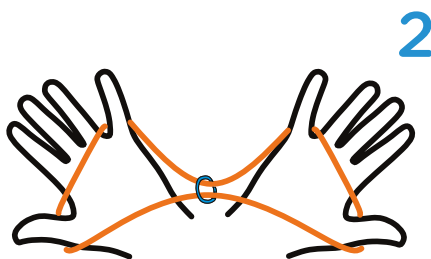
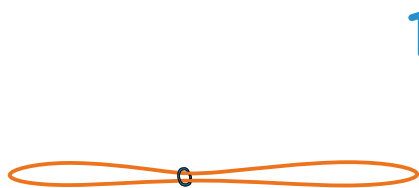
7



8



L'ANNEAU MAGIQUE



Lâcher la ficelle des deux petits
doigts, du majeur gauche et du pouce
droit!